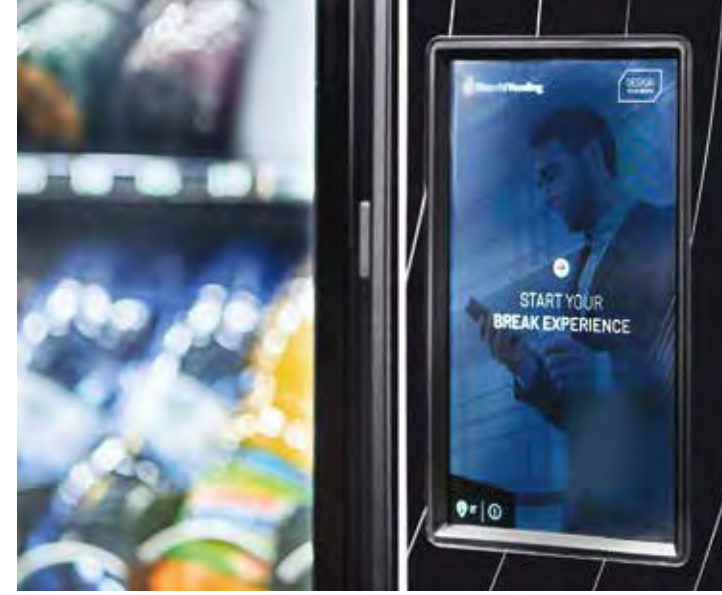


An impressive showcase for your offer.



- 01 Efficient interaction by means of the 10" or 7" touch-screen interface.
- 02 Versions with electronic display on drawers to show prices, descriptions, and promotions.
- 03 Selective lighting: LEDs on each drawer for perfect product visibility.
- 04 Internal white cell for greater visibility of products.
- 05 Maximum internal flexibility.
- 06 Additional capacity for bottles thanks to the lateral columns, and for cans thanks to the optional kits.
- 07 Master versions with luminous pathway to guide the user.
- 08 Door with large surface area that can be customised with stickers, attractive design with "diamond" shaped corners and natural anodised aluminium frame.
- 09 Illuminated dispensing compartment with transparent window showing the dispensed product.

## THE DIFFERENCE IS IN THE DETAILS

Flessy has been carefully designed to provide you with a more captivating and attractive showcase.

### TECHNICAL SPECIFICATIONS

- Electrical supply: 220-240V; 50/60HZ
- Internal electrical supply: 0.55 kW
- Plus versions with additional capacity for bottles thanks to the lateral columns, and for cans thanks to the optional kits.

### TEMPERATURE AND REFRIGERATION MANAGEMENT

- Tropicalized refrigerator unit.
- Management of different temperature profiles in accordance with the new classes required by regulations:
  - category 2: whole machine with temp. < 12°C
  - category 4: 50% of the machine with temp. < 12°C and 50% with temp. < 3°C.
- Safety device to control the temperature and block the spirals if the regulatory conditions for perishable products are not met.
- Refrigeration unit, common for the all range, easily accessible and removable.
- The dust filter is easy to extract, making maintenance easier.
- Refrigerant gas: R290 (GWP 3).

### ENERGY EFFICIENCY SOLUTIONS

- 40 mm foam-lined compartment with PVC thermal break between inside and outside.
- Ample 20 mm low-emission pyrolytic tempered double glazing.
- Anti-theft and insulated product delivery door "push".

FLESSY XL VANDAL-PROOF	Master / slave	Touch	Drawers / spirals	Selections / capacity	Leds on each drawer	Products drop sensor	Luminous pathway	Digital price display	Side compartment with 1 distribution column	Energy class
FLESSY XL + 6-53 MA AV T10	master	10"	6 / 10	53/425	■	■			68 pet 50cl**	D
FLESSY XL + 6-53 MA AV T10 DISP	master	10"	6 / 10	53/425	■	■		■	68 pet 50cl**	E
FLESSY XL 6-53 MA AV T10	master	10"	6 / 10	53/425	■	■				C
FLESSY XL 6-53 MA AV T10 DISP	master	10"	6 / 10	53/425	■	■		■		D

Dimensions mm H 1830 x W 1086 x D 852  
 Weight version XL PLUS AV 390 kg / version XL AV 355 kg

### FLESSY XL

FLESSY XL + 6-53 MA T7	master	7"	6 / 10	53/425	■	■	■		68 pet 50cl**	D
FLESSY XL + 6-53 MA T7 DISP	master	7"	6 / 10	53/425	■	■	■	■	68 pet 50cl**	D
FLESSY XL 6-53 MA T7	master	7"	6 / 10	53/425	■	■				C
FLESSY XL 6-53 MA T7 DISP	master	7"	6 / 10	53/425	■	■	■	■		D

Dimensions mm H 1830 x W 1086 x D 830  
 Weight version XL PLUS 347 kg / version XL 312 kg

\*\* Can also contain 102 standard or slim 33cl cans with the respective optional kits. It is possible to configure the 2 side columns to accommodate two different types of product in your choice of bottles, std and/or slim cans on request.

### FLESSY L

FLESSY L	Master / slave	Touch	Drawers / spirals	Selections / capacity	Leds on each drawer	Products drop sensor	Luminous pathway	Digital price display	Side compartment with 1 distribution column	Energy class
FLESSY L + 6-44 MA T7	master	■	6 / 8	44/356	■	■	■		34 pet 50cl**	D
FLESSY L + 6-44 MA T7 DISP	master	■	6 / 8	44/356	■	■	■	■	34 pet 50cl**	D
FLESSY L 6-44 MA T7	master	■	6 / 8	44/356	■	■	■			C
FLESSY L 6-44 MA T7 DISP	master	■	6 / 8	44/356	■	■	■	■		D
FLESSY L 6-44 SL	slave		6 / 8	44/356	■	■				C
FLESSY L 6-44 SL DISP	slave		6 / 8	44/356	■	■		■		D

Dimensions mm master H 1830 x W 870 x D 830 / slave H 1830 x W 715 x D 830  
 Weight version L PLUS MA 275 kg / version L MA 250 kg / version L SL 210 kg

\* Configurable with up to 7 drawers on XL and L versions, on request.  
 \*\* Can also contain 51 standard or slim 33cl cans with the respective optional kits.



Bianchi Vending is a trademark of:  
 Bianchi Industry Spa - info@bianchiindustry.com  
 Corso Africa 2/3/9 - 24040 Loc. Zingonia, BG, Italia  
 T: +39 035 450 2111 - F: +39 035 883 304

Specifications and technical information given are indicative and may be subject to change without prior notice.



The cold food and drink dispenser for those looking for maximum visibility and flexibility.



## FLESSY A SHOW ON DISPLAY



PHYGITAL SOLUTIONS

## THE RIGHT PRODUCT AT THE RIGHT TIME: AMAZING FLEXIBILITY

Showcase your ideas: Flessy lets you create a show-stopping offer and update it whenever you want.

Seasons pass, your customers' tastes change, but with Flessy you are always ready to tempt them with the right products. Do you need an all-food, all-snack or a half-and-half solution? You can easily manage different temperature profiles. Are the water bottles running out? Choose the Plus version with an additional side column. Do you want to increase consumption? Create a special promotion. Flessy adapts to your business ideas: all you have to do is imagine the next evolution and put it into practice. All the flexibility you want, with the visibility you deserve.

A well-lit, comprehensively-supplied display, alluring to both the eyes and the appetite: difficult, or even impossible, to resist. And if you want to be even more impressive, you can attract your clients' attention by personalising the door of the machine using stickers.

Hungry, thirsty? With Flessy, you will never leave people dissatisfied. There is a wide and diverse range of cold beverages and snacks, and the purchasing experience is intuitive and exciting at every stage.





# EASY CONFIGURATION MAINTENANCE INTERACTION

## EASY CONFIGURATION

**Physical** Redesign Flessy's configuration to highlight the right products according to seasonality and your customers' preferences. The cell offers you the utmost flexibility and you can extend the food area thanks to the air deflector that allows you to manage various zones at different temperatures.

**Digital** You have total control with the new BI-Creator configuration software. Thanks to the guided procedure and an intuitive graphical interface, you only set what you need and can easily change the machine layout at any time.

## BI-CREATOR



## EASY MAINTENANCE

**Physical** All of Flessy's physical components are easy to remove, clean and replace. However, the real revolution is that you always know what is happening "behind the scenes", with the automotive-derived electronic platform: the machine understands its own operating status and provides you with all the instructions needed to solve any problems.

**Digital** Gain an advantage and elevate your work to a new level of efficiency. Flessy automatically analyses and records the status of all individual electrical and electronic components, providing you with a data history that you can integrate into any third-party IoT platform.



## EASY INTERACTION

**Physical** A world of possibilities is a world of desires. It offers an intuitive, engaging and attractive consumer experience, with the 7"/10" touchscreen guiding the user through their choices. Promotions and bundle sales will tempt your customers, and product information will win their curiosity and help you sell more.

**Digital** Unleash the power of your imagination. Thanks to the new BI-Creator software you can customize the Flessy graphic interface in a few steps.

# FLESSY XL VANDAL-PROOF

THE VANDAL-PROOF DISPENSER FOR THOSE LOOKING FOR MAXIMUM CAPACITY AND SECURITY.

Choose FLESSY XL and FLESSY PLUS XL VANDAL-PROOF for outstanding performance in terms of capacity and thanks to the vandal-proof protection system you can safely place FLESSY even in high-traffic locations such as train or underground stations.



FLESSY XL VANDAL-PROOF

### EASY TO USE

- 10" touch user interface.
- Versions with digital price display on the drawers.
- LEDs on each drawer for perfect product visibility.

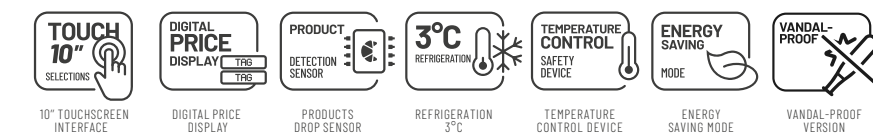
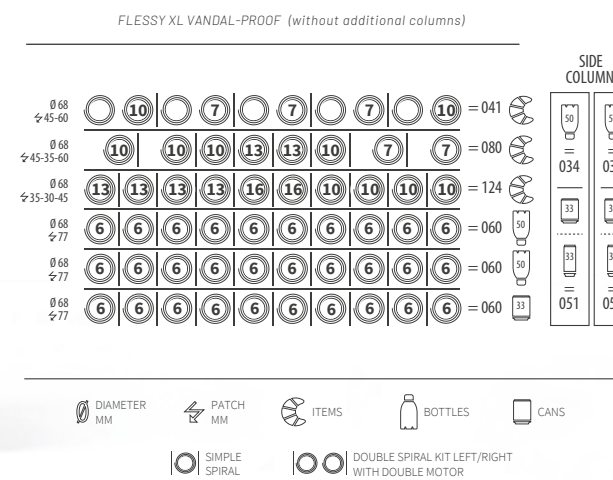
### LARGE CAPACITY

- 6 drawers with 10 spirales.
- Also available with 7 drawer on request.
- PLUS version with 2 additional columns to increase the capacity of the bottles. Alternatively, area with shelves for storing products.

### MAXIMUM SECURITY

- Vandal-proof door opening handle.
- Vandal-proof coin introduction and return system.
- Multi-layered insulated glazing with low-emission tempered glass and external 5 mm polycarbonate protection.

FLESSY XL PLUS VANDAL-PROOF (with additional columns)



# FLESSY XL

EXTRA-LARGE TO MEET THE NEEDS OF THE BUSIEST AREAS.

Choose FLESSY XL and FLESSY PLUS XL for outstanding performance in terms of capacity and offer your customers the widest possible choice.



FLESSY XL

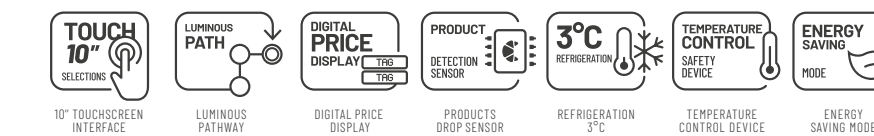
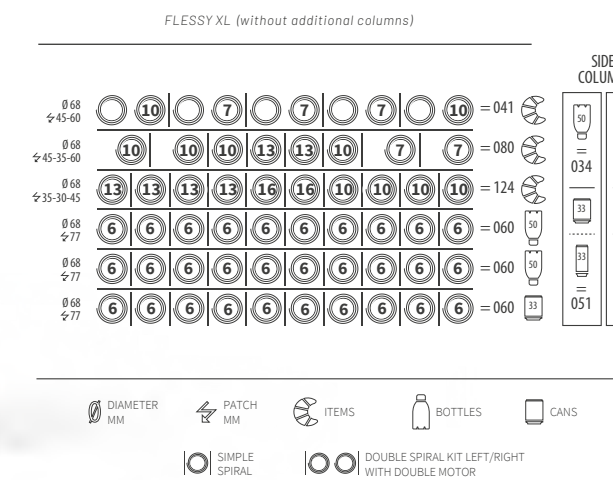
### EASY TO USE

- 7" touch user interface.
- Luminous pathway to guide the user.
- Versions with digital price display on the drawers.
- LEDs on each drawer for perfect product visibility.

### LARGE CAPACITY

- 6 drawers with 10 spirales.
- Also available with 7 drawer on request.
- PLUS version with 2 additional columns to increase the capacity of the bottles. Alternatively, area with shelves for storing products.

FLESSY XL PLUS (with additional columns)



# FLESSY L

THE FORMAT TO EXPAND YOUR BUSINESS.

FLESSY L and FLESSY PLUS L guarantee you a large machine capacity and optimal product visibility in any consumption context. By choosing FLESSY PLUS L you have more space for bottles and cans, while with the slave version you can combine FLESSY with a hot drinks machine and create an even richer and more complete offer.



INTUITY PLUS + FLESSY L SLAVE



FLESSY L

### EASY TO USE

- 7" touch user interface.
- Luminous pathway to guide the user (master version).
- Versions with digital price display on the drawers.
- LEDs on each drawer for perfect product visibility.

### LARGE CAPACITY

- 6 drawers with 8 spirales.
- Also available with 7 drawer on request.
- PLUS L version with 1 additional column to increase the capacity of the bottles. Alternatively, area with shelves for storing products.

### SLAVE MODELS

- The slave versions can be combined with a master machine for both hot drinks and snacks.

FLESSY L PLUS MASTER (with additional columns)

